



TOUR DE PINES 1

7TH JUNE 2026

GNANGARA PINE PLANTATION

Tour de Pines is a single-heat sleddog race hosted by the Western Australian Sleddog Sports Association (WASSA).

In this event, new novice entrants can compete in Novice Scooter and/or Canicross, adhering to race rules and proper mushing etiquette. You cannot use the same dog for Novice Scooter and Canicross for this event, if you are entering both classes. Novice competitors cannot compete in open bikejoring classes in this event. Reach out to committee if you need to arrange a scooter to borrow.

A dog may compete in Canicross in addition to another race class within the same event, provided that the two classes in which the dog is competing are not consecutive and a minimum of one full class separation exists between them.

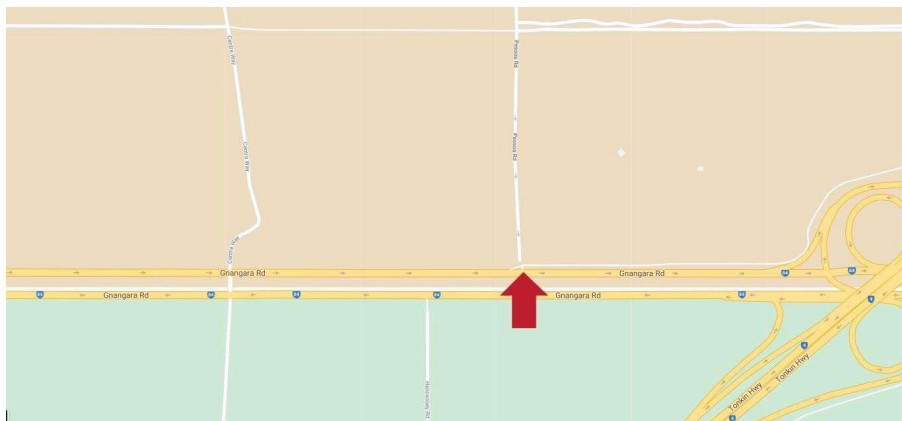
It is the entrant's responsibility to ensure their dogs have the required fitness level to run the distance entered. A driver may compete in more than one class at this event, but dogs must only compete in one class. If running more than one class a different dog must be used in each class entered.

5:00am **Check-in**
5.30am **Drivers Meeting**
6:00am **Start (temperatures allowing)**

Directions

Gnangara Pine Plantation, Lexia

Turn left onto Pessoa Road off Gnangara Road (look for WASSA sign) then follow WASSA Signs.



Emergency Contact Info

EVH Emergency Vet Hospital 1 Chokolich St, Wangara Phone: 9200 4460 24 hours	Kingsway Veterinary Centre Kingsway Shopping Centre 168 Wanneroo Rd, Madeley Phone: 9309 9993 Saturday 9am – 4.30pm Sunday 10am – 12pm
--	--

Parking

Parking will be available onsite. We ask you please ONLY park in the areas marked for parking on the day.

Race Schedule

Drivers meeting at 5:30am Sunday morning

Racing starts at 6:00am (depending on temperature)

Race classes will be :

3.5km Open 2-dog Bikejoring & Open 2-dog Scooter (running together)

2.5km Open 1-dog Bikejoring

2.5km Open Scooter 1-dog

2.5km Novice & Junior (running together)

2.5km Canicross

There will be time after all the races are completed to cool down your dogs and chat to fellow competitors before presentations.

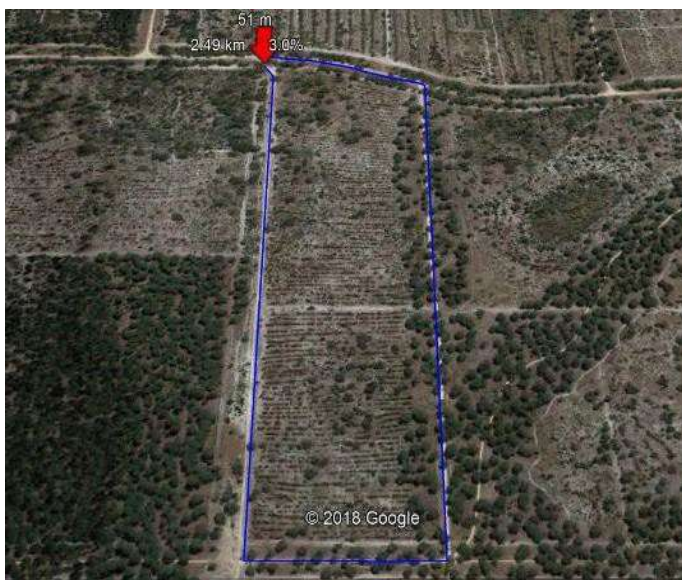
All dogs MUST be on lead at all times. As a courtesy to competitors, any dogs in attendance not competing must be well clear of races in progress and competing dogs. Please ensure that all dogs not actively competing (or preparing to compete) in the current classes are kept either in the car, trailer or secured well away from the track. Do NOT walk your dog anywhere near the tracks while people are racing.

Race rules must be STRICTLY adhered to!

Map of Tracks and Distances

Open Bikejoring, Novice Scooter & Canicross

2.5km track



3.5km track



Race Etiquette

All competitors and spectators are to remember the following to ensure safety of both humans and dogs on race days.

- All dogs are to remain on leads, stake out lines or drop lines at all times, if not secured in a cool car or trailer.
- All people and dogs are to remain clear of the racetracks when classes are running.
- **Do not stand in front of the start/finish line. please stay well behind the barriers.**
- Speak to owners of dogs before approaching their dogs.
- Keep a distance of at least 2 metre's from staked out dogs, when walking/stretching your dogs.
- Clean up after yourselves and your dogs to ensure future use of race locations.
- For any enquiries or questions regarding the races please speak to a committee member or race official (race officials will be wearing high visibility vests).

Helmets MUST be worn in open bikejoring and novice scooter classes. Bikes and scooters must be equipped with cutters (cutters must not have an open blade). Bike/Scooter headlights may be required for races if temperatures dictate an early start.

The issued bib must be worn and visible at all times during the race.