



# PAWS IN THE PADDOCK

MAY 23, 2026

PERRY'S PADDOCK, YELLAGONA REGIONAL PARK, WANNEROO.

---

**Paws in the Paddock is a single-heat canicross race hosted by the Western Australian Sleddog Sports Association (WASSA).**

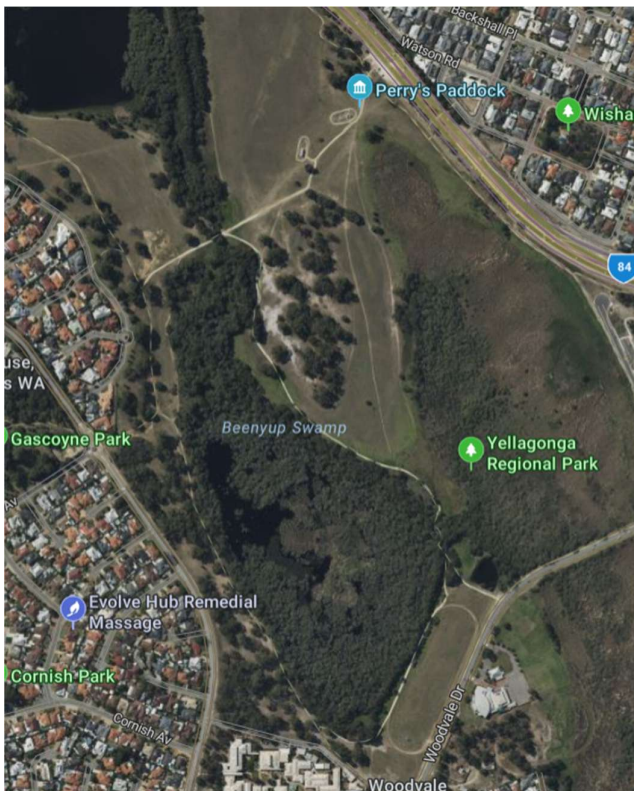
---

It is the entrant's responsibility to ensure their dogs have the required fitness level to run the distance entered. Only one distance/heat can be entered at this event.

**6:30am**      **Check-in**  
**7:00am**      **Drivers Meeting**  
**7:15am**      **Start (temperatures allowing)**

## Directions

PYellagona Regional Park is located on Ocean Reef Road between the Trappers Drive and Woodvale Road intersections.



## Emergency Contact Info

<b>EVH Emergency Vet Hospital 1</b> Chokolich St, Wangara Phone: 9200 4460 24 hours	<b>Kingsway Veterinary Centre</b> Kingsway Shopping Centre 168 Wanneroo Rd, Madeley Phone: 9309 9993 Saturday 9am – 4.30pm Sunday 10am – 12pm
--	--

## Parking

Parking is available on Ocean Reef Road and some street parking is available on Streeton Promenade. It is a condition of our permission to hold an event in the park that there is **STRICTLY NO VERGE PARKING ALLOWED ON STREETON PROMENADE.**

## Race Schedule

**Drivers meeting at 7:00am Sunday morning**

**Racing starts at 7:15am (depending on temperature)**

**Race classes will be :**

2.5km Canicross – run or walk

7.5km Canicross - run

Placing will be awarded to men, women and juniors. All competitors in the same distance will run in the same heat. There will be time after all the races are completed to cool down your dogs and chat to fellow competitors before presentations.

**All dogs MUST be on lead at all times.** As a courtesy to competitors, any dogs in attendance not competing must be well clear of races in progress and competing dogs. Please ensure that all dogs not actively competing (or preparing to compete) in the current classes are kept either in the car, trailer or secured well away from the track. Do NOT walk your dog anywhere near the tracks while people are racing.

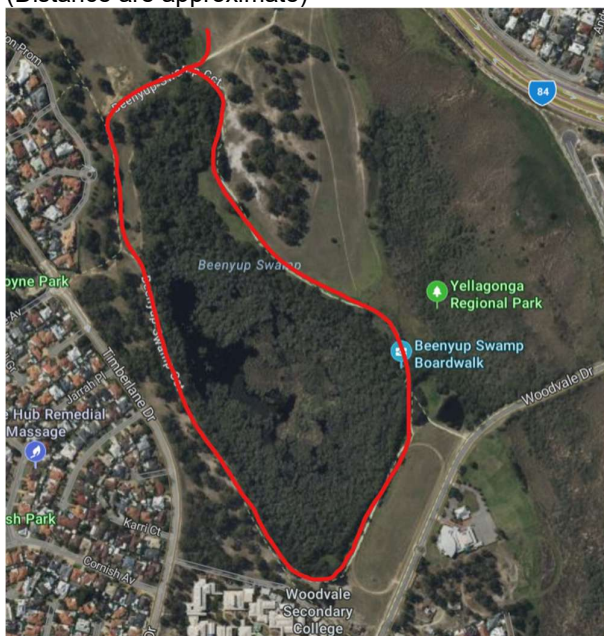
**Race rules must be STRICTLY adhered to!**

## Map of Tracks and Distances

2.5km – 1 lap

7.5km – 3 laps

(Distance are approximate)



## Event Etiquette

All competitors and spectators are to remember the following to ensure safety of both humans and dogs on race days.

- All dogs are to remain on leads, or secured in a cool car or trailer.
- All people and dogs are to remain clear of the racetracks when classes are running.
- Do not stand in front of the start/finish line, please stay well behind the barriers.
- Speak to owners of dogs before approaching their dogs.
- Keep a distance of at least 2 metres from other dogs when walking/stretching your dogs.
- Clean up after yourselves and your dogs to ensure future use of race locations.
- For any enquiries or questions regarding the races please speak to a committee member or race official (race officials will be wearing high visibility vests).

**The issued bib must be worn and visible at all times during the race.**