

Information Pack

This event will be held at the Jarrahood Pine Plantation Airstrip.

Safety Officer and First Aid

In the event of an emergency, the car horn will sound 5 times to signal and will continue to sound off. Everyone should meet at club HQ without your dogs to be briefed on the emergency. In the event of loose dogs do not leave camp if you have not been briefed. **HQ is usually located at the WASSA Club Trailer.** Only those with UHF Radios will be deployed and channel 21 to be used.

Food/Drink

BYO
This event has no food or water facilities, please ensure you bring extra to cover yourself and your dogs over the course of the weekend.

Medical Issues

If you or your dog(s) are in need of urgent medical attention, the nearest facilities are located as following:

Animal Care		Human Emergency Department Facilities	
GEOVet Veterinary Hospital 40 minutes from Jarrahood 89 Bussell Hwy, West Busselton WA (08) 9754 4422 24hr Emergency Service	Busselton Vet Hospital 40 minutes from Jarrahood 60 Bussell Highway Busselton WA (08) 9752 1433 24hr Emergency Service - Press 1	Busselton Heath Campus 40 minutes from Jarrahood Mill Road Busselton WA (08) 9753 6000	Donnybrook Hospital (Open 24 Hours) 40 minutes from Jarrahood Bentley Street Donnybrook WA (08) 9780 4333

Venue

Jarrahood Pine Plantation, Jarrahood WA. The race site is approximately 200km south of Perth, 25 kms South East of Busselton, accessed from the Vasse Highway.

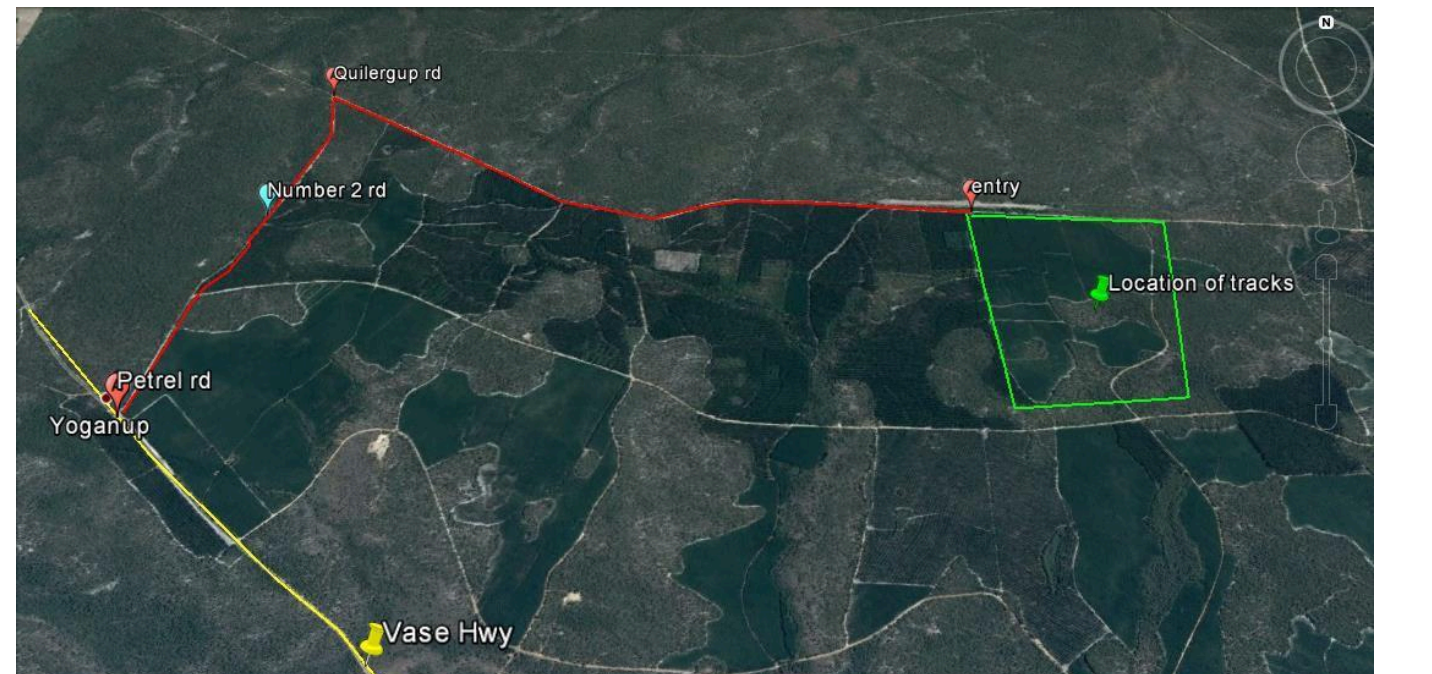
The entry to the plantation is off the Vasse Hwy in Yoganup on “Number Two Road” (The street sign says “**Petrel Rd**”, approximately 1.2km from Haley Road.

The easiest way into the event HQ is to follow Number Two road approximately 2.8km to a “T” junction, Turn Right onto Quilergup Road and follow it for approximately 4.3km to the airstrip. The airstrip will be on the left.

We will have WASSA markers/signs on the road as you get towards the site. Event HQ will be located at the entrance and people can park to the left or right of the Airstrip.

Coordinates should be used in conjunction with details listed above to avoid being taken by google maps on roads which may not be accessible = 33°45’37.4”S 115°37’16.6”E (-33.760394, 115.621279)

****Please note if you are arriving prior to 2pm on the Friday, signs/markers may not yet be in place so please take a copy of the maps with you.**



Accommodation/Amenities

Camp is open from midday Friday

You can camp to the left or the right of the airstrip as per the location in blue on the map provided.

Event HQ is a bush campsite with no facilities, but plenty of room for tents, campers, RV's and caravans.

Please be considerate and leave camping spaces near the start line for the entrants with larger/multiple teams. Should you be camping next to someone, please ensure you liaise with them prior to setup.

We will have a small number of portaloos on site, but if you can bring your own, please do.

It is an open space (airstrip) with limited shade unless you camp in the trees.

The campsite will be close to the race start/finish chute, so you will not be required to drive between the camp and start line.

There is no water on site, so please bring enough water for your dogs and yourself to be self-sufficient for the duration of the event, with extra just in case.

There will be no rubbish disposal facilities on site, so all rubbish must be taken out with you (including your dog's poo).

Campfires are permitted only if contained within a portable campfire pit/ring. No ground fires are allowed.

Dogs are not permitted to be free running or unrestrained at any time. Please ensure your dog(s) are on lead, tie-out line, crated or in the car/trailer when not racing.

The area surrounding the plantation is subject to regular **1080 baiting which unrestrained dogs are at risk from.**

When staking out your dogs around the campsite please take into consideration the proximity of any other dogs & campers, clean up after your dog, and fill in any holes if your dog digs. Please also remove any straw and dog fur from around your campsite before you leave.

*****PLEASE NOTE*****

It is a condition of our site permit from DPaW that we do not bring soil or plant material onto site, to prevent dieback issues. 'Bleached, clean straw with no seeds' is permitted.

If you have another kind of straw in your dog trailers, please remove it before your travel to the event site. Please be mindful of this and bring appropriate dog bedding, as well as scooters, bikes, tents and vehicles that are free from soil. We want to ensure continued, future access to this race site.

Vaccination Checks

There may be animal vaccination checks at this activity, vaccination requirements are to be followed as per the Australian Sleddog Sports Association Race Rules and Procedures – Rule 5. Disease.

An online generator will be used to randomly select 25% of entrants by bib number. **Please ensure you have all the relevant up-to-date vaccination/Titre Testing information and microchip numbers for every dog you bring** to the event that meets the **ASSA Race Rules**.

Camp Etiquette

All members and guests are to remember the following to ensure safety of both humans and dogs on race days.

- All dogs are to remain on leads, stake out lines or drop lines at all times, if not secured in a cool car or trailer.
- All people and dogs are to remain clear of the racetracks when classes are running.
- **Do not stand in front of the start/finish line, please stay well behind the barriers.**
- Speak to owners of dogs before approaching their dogs.
- Keep a distance of at least 2 metres from staked out dogs, when walking/stretching your dogs.
- Clean up after yourselves and your dogs to ensure future use of race locations.
- For any enquiries or questions regarding the races please speak to a committee member or email committee@wassa.com.au

Helmets MUST be worn in all bikejoring, scooter and rig classes. Bikes, scooters and rigs must be equipped with cutters (cutters must not have an open blade). Headlights may be required if temperatures dictate an early start and are the responsibility of the camper/musher.

Race Etiquette and rules can be found online at www.wassa.com.au, under the documents tab.

Race Tracks

Races will be run on the tracks immediately south of the campsite.

Race distances will be approximately as follows **and subject to change** depending on weather and track conditions.

Novice, Junior, Veteran (1 & 2 Dog), Touring (1 & 2 Dog) & Canicross = 2.0 kms approx.



1 Dog & Bikejoring = 3.2 kms approx.



2 Dog, 3 Dog = 5.2 km approx.



4 Dog, 6 Dog = 6.7km approx.

