



# WA SLEDDOG SPORTS TOUR DE PINES 1

GNANGARA PINE PLANTATION  
9TH JUNE

## Information Pack

**Tour de Pines is a single heat Open Bikejoring, Novice Scooter, Junior Scooter and Canicross Sleddog Race hosted by the Western Australian Sleddog Sports Association (WASSA).**

Race classes will be approximately 3.5km Open Bikejoring 1 dog or 2 dogs and Canicross, 2.5km Open Bikejoring, Novice Scooter, Junior Scooter and Canicross. 3.5km Open Bikejoring 1 dog or 2 dogs will run together.

To cater for our new novices we have added an extra heat especially for you, where you can race but you must still adhere to the race rules and proper mushing etiquette. Novices may also race in Canicross but you cannot use the same dog for Novice Scooter and Canicross for this event. Should you not have a scooter and wish to compete, please reach out to committee to arrange a scooter to borrow.

It is the entrant's responsibility to ensure their dogs have the required fitness level to run the distance entered. A driver may compete in more than one class at this event, but dogs must only compete in one class. If running more than one class a different dog must be used in each class entered.

Committee may reduce the distance of each class if required on the day. Factors such as temperature and fitness if warm weather hampers good training days prior to the race. The dogs are our priority and safety for them paramount, e.g. 3.5km reduced to 3.5km at previous Tour de Pines

<b>5:00am</b>	<b>Check-in</b>
<b>5:30am</b>	<b>Drivers Meeting</b>
<b>6:00am</b>	<b>Start (temperatures allowing)</b>

## Directions

Turn left onto Pessoa Road off Gnangara Road. Look for the WASSA signs. The turn into Pessoa Road is over a footpath. The gate will be open.

If travelling from the east, the entrance is on the other side of the dual carriageway. There is a turning point opposite to the Rick Hammersley Centre turn.



## Emergency Contact Info

<b>EVH Emergency Vet Hospital</b> 1 Chokolich St, Wangara Phone: 9200 4460 24 hours	<b>Kingsway Veterinary Centre</b> Kingsway Shopping Centre 168 Wanneroo Rd, Madeley Phone: 9309 9993 Saturday 9am – 4.30pm Sunday 10am – 12pm	<b>AEC Emergency Vet Hospital</b> 227 Great Eastern Highway, Midland Phone: 6500 3010 24 hours
--	--	--

## Parking

Parking will be available onsite. We ask you please ONLY park in the areas marked for parking on the day. Toilets available (portable toilets) towed near race HQ for your comfort.

## Race Schedule

We are pleased to have Rachael Salter as our Race Marshall for this event. The Race Jury will consist of Jono Lane, Jarrad Foreman and Jess West.

Drivers meeting at 5:30am Sunday 9th June 2024

Racing starts at 6:00am (depending on temperature)

- 3.5km Open Bikejoring 2 dogs
- 3.5km Open Bikejoring
- 2.5km Open Bikejoring
- 2.5km Novice Scooter
- 2.5km Junior Scooter
- 3.5km Canicross
- 2.5km Canicross

\*Please note this is not the race grouping or order for the day.

There will be time after all the races are completed to cool down your dogs and chat to fellow competitors before presentations.

**All dogs MUST be on lead at all times.** As a courtesy to competitors, any dogs in attendance not competing must be well clear of races in progress and competing dogs. Please ensure that all dogs not actively competing (or preparing to compete) in the current classes are kept either in the car, trailer or secured well away from the track. Do NOT walk your dog anywhere near the tracks while people are racing.

Race rules must be STRICTLY adhered to!

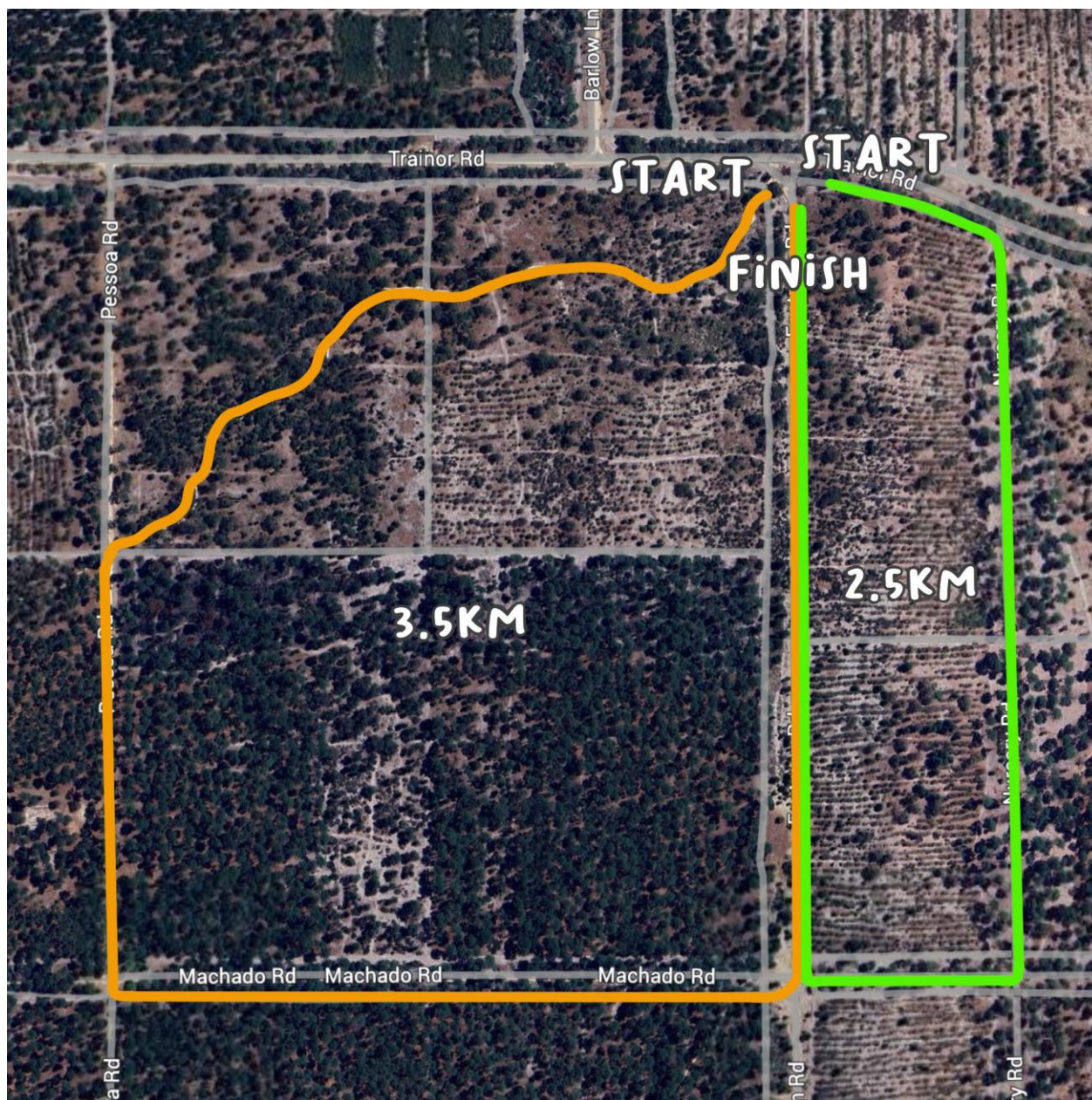
## Map of Tracks and Distances

Open Bikejoring, Novice Scooter, Junior Scooter & Canicross

2.5km track

Open Bikejoring & Canicross

3.5km track



## Race Etiquette

All competitors and spectators are to remember the following to ensure safety of both humans and dogs on race days.

- All dogs are to remain on leads, stake out lines or drop lines at all times, if not secured in a cool car or trailer.
- All people and dogs are to remain clear of the racetracks when classes are running.
- **Do not stand in front of the start/finish line, please stay well behind the barriers.**
- Speak to owners of dogs before approaching their dogs.
- Keep a distance of at least 2 meters from staked out dogs, when walking/stretching your dogs.
- Clean up after yourselves and your dogs to ensure future use of race locations.
- For any enquiries or questions regarding the races please speak to a committee member or race official (race officials will be wearing high visibility vests).

Helmets MUST be worn in open bikejoring and novice scooter and junior scooter classes. Bikes and scooters must be equipped with cutters (cutters must not have an open blade). Bike/Scooter headlights may be required for races if temperatures dictate an early start.

The issued bib must be worn and visible at all times during the race.

**RFID** timing chip will be provided with your bib – note if you do not return your bib & chip to be signed back in by committee or committee appointed representative, a \$65 fee is applicable.

**Please ensure after racing, bib & RFID chip is returned promptly before presentations start.**

**By entering this race and paying entry fee/s you agree with the above requirements.**