

WASSA RACE 4

JARRAHWOOD JAUNT

9TH - 10TH SEPTEMBER



Information Pack

This event will be held at the Jarrahwood Pine Plantation Airstrip and is being held on 9th and 10th September 2023 as a **morning/morning race**. The **first driver's meeting is at 5.10AM SATURDAY MORNING**.

The tracks here are wide, twisty and flat, and should make for some great racing. We also suggest bringing your wet weather gear and change of clothes/shoes with the possibility of rain. We will be running the tracks in reverse to our last jaunt here. Everyone is fitter for all our racing, training and experience is growing. Let's challenge our training and have some fun with this familiar race site.

Start/Finish lines will be close to the campsite with no requirement to drive to them.

Safety Officer and First Aid

In the event of an emergency, the car horn will sound 5 times to signal and will continue to sound off.

Everyone should meet at club HQ without your dogs to be briefed on the emergency. In the event of loose dogs do not leave camp if you have not been briefed.

Only those with UHF Radios will be deployed and channel 21 to be used.

Food/Drink

BYO

This event has no food or water facilities, please ensure you bring extra to cover yourself and your dogs over the course of the weekend.

Medical Issues

If you or your dog(s) are in need of urgent medical attention, the nearest facilities are located as following:

Animal Care		Human Emergency Department Facilities	
GEOVet Veterinary Hospital 40 minutes from Jarrahwood 89 Bussell Hwy, West Busselton WA (08) 9754 4422 24hr Emergency Service	Busselton Vet Hospital 40 minutes from Jarrahwood 60 Bussell Highway Busselton WA (08) 9752 1433 24hr Emergency Service - Press 1	Busselton Heath Campus 40 minutes from Jarrahwood Mill Road Busselton WA (08) 9753 6000	Donnybrook Hospital (Open 24 Hours) 40 minutes from Jarrahwood Bentley Street Donnybrook WA (08) 9780 4333

Venue

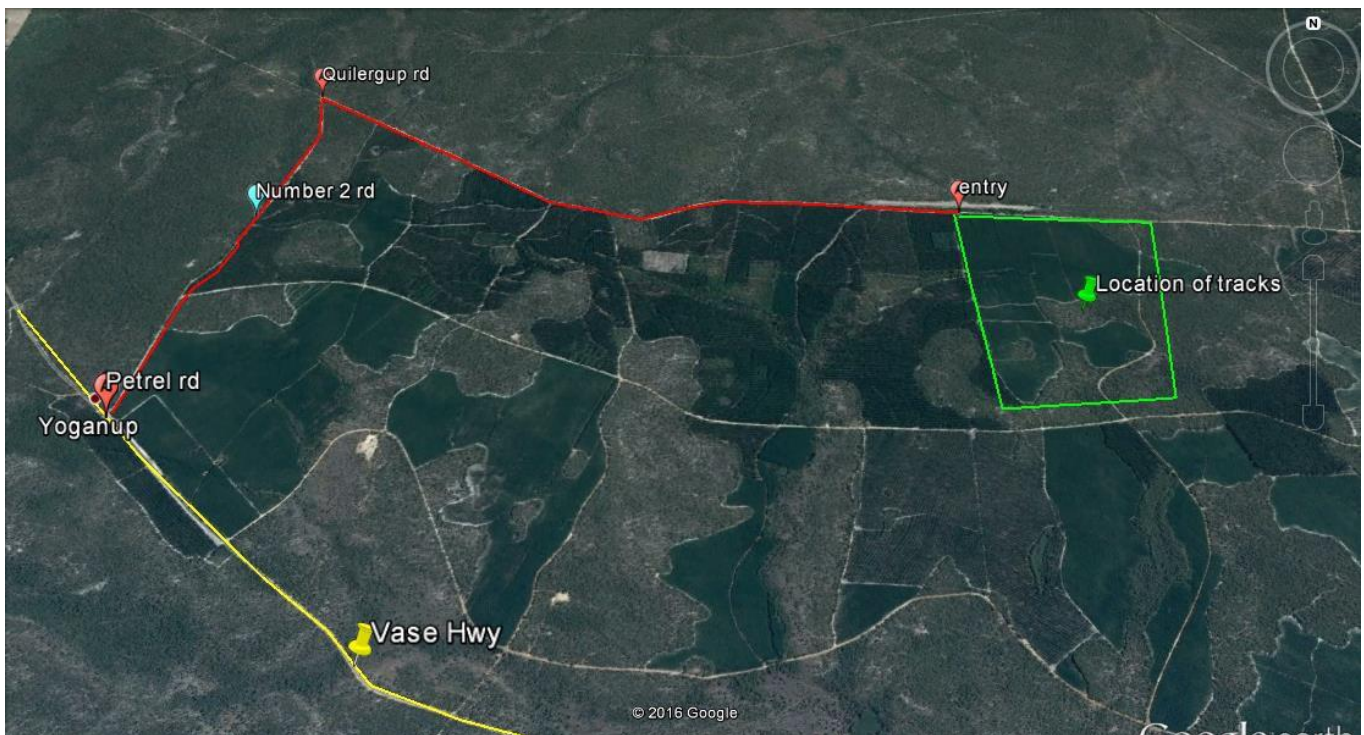
Jarrahwood Pine Plantation, Jarrahwood WA. The race site is approximately 200km south of Perth, 25 kms South East of Busselton, accessed from the Vasse Highway.

The entry to the plantation is off the Vasse Hwy in Yoganup on “Number Two Road” (The street sign says “**Petrel Rd**”, approximately 1.2km from Haley Road.

The easiest way into the event HQ is to follow Number Two road approximately 2.8km to a “T” junction, Turn Right onto Quilergup Road and follow it for approximately 4.3km to the airstrip. The airstrip will be on the left.

We will have WASSA markers/signs on the road as you get towards the site. Event HQ will be located at the entrance and people can park to the left or right of the Airstrip. Use these Coordinates = 33°45'37.4”S 115°37'16.6”E (-33.760394, 115.621279) plus directions above.

***Please note if you are arriving prior to 2pm on the Friday, signs/markers may not yet be in place so please take a copy of the maps with you or download to your phone as mobile connection is not reliable.*



Accommodation/Amenities

Camp is open from midday Friday 8th September 2023.

You can camp to the left or the right of the airstrip as per the location in blue on the map provided.

Event HQ is a bush campsite with no facilities, but plenty of room for tents, campers, RV's and caravans. **Please be considerate and leave camping spaces near the start line for the entrants with larger/multiple teams. Should you be camping next to someone, please ensure you liaise with them prior to setup.**

We will have a small number of portaloos on site, but if you can bring your own, please do.

It is an open space (airstrip) with limited shade unless you camp in the trees.

The campsite will be close to the race start/finish chute, so you will not be required to drive between the camp and start line.

There is no water on site, so please bring enough water for your dogs and yourself to be self-sufficient for the duration of the event, with extra just in case.

There will be no rubbish disposal facilities on site, so all rubbish must be taken out with you (including your dog's poo). Campfires are permitted only if contained within a portable campfire pit/ring. No ground fires are allowed.

Dogs are not permitted to be free running or unrestrained at any time. Please ensure your dog(s) are on lead, tie-out line, crated or in the car/trailer when not racing.

The area surrounding the plantation is subject to regular **1080 baiting** which unrestrained dogs are at risk from.

When staking out your dogs around the campsite please take into consideration the proximity of any other dogs & campers, clean up after your dog, and fill in any holes if your dog digs. Please also remove any straw and dog fur from around your campsite before you leave.

PLEASE NOTE

It is a condition of our site permit from DPaW that we do not bring soil or plant material onto site, to prevent dieback issues. 'Bleached, clean straw with no seeds' is permitted.

If you have another kind of straw in your dog trailers, please remove it before your travel to the event site. Please be mindful of this and bring appropriate dog bedding, as well as scooters, bikes, tents and vehicles that are free from soil. We want to ensure continued, future access to this race site.

Vaccination Checks

There will be animal vaccination checks at this race, vaccination requirements are to be followed as per the Australian Sleddog Sports Association Race Rules and Procedures – Rule 5. Disease.

An online generator will be used to randomly select 25% of entrants by bib number. **Please ensure you have all the relevant up-to-date vaccination/Titre Testing information and microchip numbers for every dog you bring** to the event that meets the **ASSA Race Rules**.

Race Entries

*The "**Driver Name**" for each class must be entered into the **HANDLER box** when registering for each class *i.e. Woman's Bikejoring - (Handler = Driver) Suzy Smith*

*Every person attending the event must add the "Ground Fee" to your order as a **Per Person** attending *i.e 3 people attending = 3 x Ground Fee's paid (Children Under 5 Free)*
All spectators/non-mushers and non-members attending are required to pay a grounds fee.

It is the entrant's responsibility to ensure their dogs have the required fitness level to run the distance entered. A driver may compete in more than one class at this event, but dogs must only compete in one class. If running more than one class a different dog must be used in each class entered (Canicross excluded)

EVENT ENTRY CLOSING: Sunday 3rd September @ 7.00pm

EVENT LATE ENTRY CLOSING: Wednesday 6th September @ 5.00pm \$50 late fee. Email committee@wassa.com.au your entries and deposit all fees to WASSA account.

EVENT CLASS CHANGES: No class/driver changes will be available after the event closing 3/09/2023.

EVENT REFUNDS: Self refunding while online entries are open, this must be completed through Show Manager before the closing date 3/09/2023. No Refunds will be given after this cut off time and is the responsibility of the entrant to arrange.

Race Etiquette

All competitors and spectators are to remember the following to ensure safety of both humans and dogs on race days.

- All dogs are to remain on leads, stake out lines or drop lines at all times, if not secured in a cool car or trailer.
- All people and dogs are to remain clear of the racetracks when classes are running.
- **Do not stand in front of the start/finish line, please stay well behind the barriers.**
- Speak to owners of dogs before approaching their dogs.
- Keep a distance of at least 2 metres from staked out dogs, when walking/stretching your dogs.
- Clean up after yourselves and your dogs to ensure future use of race locations.
- For any enquiries or questions regarding the races please speak to a committee member or race official (race officials will be wearing high visibility vests).

Helmets MUST be worn in all bikejoring, scooter and rig classes. Bikes, scooters and rigs must be equipped with cutters (cutters must not have an open blade). Headlights may be required for races if temperatures dictate an early start.

The issued bib must be worn and visible at all times during the race.

Race Etiquette and rules can be found online at www.wassa.com.au, under the documents tab.

Race Schedule

We are pleased to have Marilynne McPaul as our Race Marshall for Jarrahwood Jaunt 2.0
The Race Jury will consist of Ken Bird, Jarrad Foreman and Louise Barnett.

5.10am Drivers Meeting - Saturday 9th September 2023

6:00am Start Saturday 9th September 2023 (temperatures dependent)

Driver's meetings will be held at the Event HQ Marquee (No dogs to be taken to race meeting). You **must attend** the race meeting, should you not be at the meeting as scheduled you will not be able to race in that day's heats.

(If for any reason you can not get to the race meeting (break down/arranged appointment etc), you must contact the Race Marshall and/or Committee prior to the Race Meeting time to advise/explain your non-attendance for the race meeting and request an exemption. Every request will be individually assessed.)

Heat 1

Driver's meeting will be held at **Saturday 9th September 2023**

Racing starts at 6am (depending on temperatures)

Classes will be run as follows:

1. 6 Dog and 4 Dog
2. 3 Dog and 2 Dog
3. 1 Dog
4. Bikejoring
5. 2 Dog Veteran, Touring and Junior
6. 1 Dog Veteran, Touring and Novice
7. Canicross
8. Pee Wee and Mini Pee Wee

Heat 2

Driver's meeting will be held at 5:30 am (depending on temperatures) Sunday 10th September 2023

Racing starts at 6 am (depending on temperatures)

Classes will be run as follows:

1. 6 Dog and 4 Dog
2. 3 Dog and 2 Dog
3. 1 Dog
4. Bikejoring
5. 2 Dog Veteran, Touring and Junior
6. 1 Dog Veteran, Touring and Novice
7. Canicross
8. Pee Wee and Mini Pee Wee

**** Heat 2 may be run in Reverse Order, should it be required at the Race Marshalls discretion****

You will be advised of the race order, and which classes are running together at the driver's meeting, the above is what we have planned and will depend on the temperatures on the day.

Please arrive at the start chute promptly when called. Races will normally start no more than 10 minutes after the last dog from the previous heat has crossed the finish line.

Start times are approximate. Temperatures on the day will dictate actual start times. Heat 2 may be run in reverse order should it be required and will be advised by the Race Marshall. If safe temperatures are not reached to allow the full race schedule to run as stated, time saving measures will be brought into play being shortening of distances in either or both heats or cancelling of heats.

Please ensure that all dogs not actively competing (or preparing to compete) in the current class are kept either in a cool car or trailer or secured well away from the track.

Please do NOT walk your dog anywhere near the tracks while people are racing.

ASSA Race Rules and WASSA Bylaws must be STRICTLY adhered to. The official rules of WASSA are available at wassa.com.au under *Documents*.

Race Tracks

Races will be run on the tracks immediately south of the campsite.

Race distances will be approximately as follows **and subject to change** depending on weather and track conditions.

Novice, Junior, Veteran (1 & 2 Dog), Touring (1 & 2 Dog) & Canicross = 2.0 kms approx.



1 Dog & Bikejoring = 3.2 kms approx.



2 Dog, 3 Dog = 5.2 km approx.



4 Dog, 6 Dog = 6.7km approx.

