



WASSA - RACE MUCK'N MAYHEM 6TH & 7TH AUGUST 2022 POINT SCORE

Information Pack

North Wialki is located in the central Wheatbelt and is approximately 3.5 hours North East from Perth CBD. The venue's host is the Sprigg family who have generously opened up their homestead to us.

The homestead has limited phone reception, so this is a chance to enjoy reconnecting with your friends and fellow mushers around the campfire instead. The homestead is on UHF channel 30 if you do need assistance whilst driving. You will be driving on dirt roads as you approach the homestead but do keep in mind loose gravel can break windows, so drive with care.

As this is a rural event, the closest town is Wialki which is a 15 minute drive away but has no shops. If you need shops you'll be heading to Beacon which is approximately a 30 Minute drive, or Muckinbudin which is approximately 40 minutes. Please read the race information pack carefully to ensure you are fully prepared for the journey to this beautiful race site.

When setting up camp, please be mindful that this is a fully functioning farming property, there is livestock and poultry nearby, with every effort made to keep them away from camp and racing tracks.

We ask you to ensure that ALL dogs are contained/restrained at all times as per WASSA rules. There are working dogs on the farm and we need to ensure our dogs do not interrupt them should they be working nearby.

There are prickles on the farmland so please wear shoes and please bring spare tyre tubes for your bikes/scooters!!

Please pick up all dog poo, this is someone's property we need to look after.

Safety Officer and First Aid

In the event of an emergency, the car horn will sound 5 times to signal and will continue to sound off.

Everyone should meet at club HQ without your dogs to be briefed on the emergency. In the event of loose dogs do not leave camp if you have not been briefed.

Only those with UHF Radios will be deployed and channel 21 to be used.

Food/Drink

Saturday Lunch, Saturday Dinner and Sunday Breakfast menu options are available to purchase thanks to our amazing hosts. Food is served in the shearing shed with cash transactions only. Paper/plastic plates and cutlery as well as disposable coffee cups are available but it is greatly appreciated if where possible you can provide your own.

When filling in your entries on Show Manager, please let us know in the Memo section of your race entry if you are wishing to take advantage of the catering available so we can let our hosts know.

NOTE: If you have not pre-booked dinner please let hosts/committee know as early as possible upon arrival to avoid disappointment.

What to bring:

- Plates, cutlery and cups
- Camp chairs
- Money
- Food (for the meals not being catered for)
- Water
- Your own fire pits and firewood (optional) or firewood for the communal fire pit
- Tyre Tubes!! There are prickles

Medical Issues

If you or your dog(s) are in need of urgent medical attention, the nearest facilities are located as following:

Animal Care	Human Emergency Department Facilities		
Vet 30 minutes from Race Site Dr Heather Stewart (08) 9048 7031	Mukinbudin Nursing Post 40 minutes from Race Site Cnr Ferguson & Maddock Street Mukinbudin WA (08) 9047 1123	Kunnunopin Hospital 30 minutes from Race Site Approx. 106km Leake Street Kunnunopin WA (08) 9683 0222 Has Emergency Department	Merredin Hospital 40 minutes from Race Site Approx. 128km Kitchener Road Merredin WA (08) 9081 3222 Has Emergency Department

Venue

If you are located North of Perth:

- Drive North East along Toodyay Rd to **Toodyay**
- East at Goomalling Toodyay Rd towards **Goomalling**
- Follow through to Goomalling Wyalkatchem Rd to **Dowerin** *(Last Fuel Stop for 200km)*
- North (left turn) onto Stewart St, and follow it onto Dowerin-Kalannie Rd,
- Follow Dowerin-Kalannie Rd onto Burakin-Wialki Rd to **Mollerin**
- Stay on Burakin-Wialki Rd past Mollerin to **Beacon** *(Fill up fuel here for trip home if need be – 24 hour self-service)*
- Stay on Burakin-Wialki Rd (connected together by Lucas St) to **Wailki**
- Continue onto Wialki N E Rd connecting onto Calton Rd
- Follow Calton Rd and turn North (left) onto Moondon Rd *(14.2km, 34 mins)*
- Travel approx. 2.1km until you reach 1525 Moondon Rd, there is a turn on the Right into the property

If travelling from East of Perth:

- Travel on Great Eastern Highway towards Northam, take the Goomalling/Northam Rd exit off Great Eastern Highway
- Head North to **Goomalling**
- Go to Goomalling then Dowerin, Wyalkatchem and Trayning
- Turn Left onto the Bencubbin /Kellerberrin Rd at Trayning
- Stay on the Bencubbin/Kellerberrin Rd for 14km then take a Right turn onto Harrod Rd
- When you get to the T road at the end of Harrod Rd turn Left this will take you all the way into Mukinbudin Town
- Once you get into Mukinbudin go over the railway line and stay on the Mukinbudin North Rd towards **Bonnie Rock**
- At the end of Mukinbudin North Rd turn right at the T road towards Bonnie rock, stay on the road for 14km
- Turn left onto Moondon Rd
- Stay on Moondon Rd for 15km until you see the WASSA signs, turn right into the camping area.

***GPS co-ordinates to the property entrance off Moondon Road are (-30.44, 118.22)**

Please keep an eye on your fuel and fill up at any one of the mentioned towns.

Travel up the driveway on the RIGHT side of the road to the shed located behind the sheep pens. Please camp in the space near the buildings (**blue star on map**). The **yellow cloud** on the map is the start chute for all classes; Please DO NOT camp too close here – we recommend teams set up near here.



Please plan your route and come prepared with a detailed road map, do not rely solely on the directions and map provided above. These maps are a guide. **Please also note that some phone-based GPS devices will not work.** Check the route before you leave and do not plan to relying on your in car GPS. Drive with a friend, or in a convoy. We will leave signposts out where we can once you get near the race site, and suggest whichever way you come in, to follow them.

Accommodation/Amenities

Camp is open from Friday 5th August 2022.

Accommodation at the Muck'n Mayhem race will be basic bush camping only, with plenty of room for tents, campers, RV's and caravans. **Please be considerate and leave camping spaces near the start line for the entrants with larger/multiple teams. Should you be camping next to someone, please ensure you liaise with them prior to setup.**

The campsite will be close to the race start/finish chute, so you will not be required to drive between the campsite and start line.

Toilet facilities are on site. If you have your own portable toilet, you are encouraged to bring and use it so we can maximize the use of these facilities.

There are no water facilities at this event. **You should plan on being entirely self-sufficient for the duration of this event** and ensure you bring enough for you and your dogs for the weekend.

Parking and camping are all located in the same area. There is no driving required from the camping area to the race start.

Vaccination Checks

There will be animal vaccination checks at this race.

An online generator will be used to randomly select 25% of entrants by bib number. **Please ensure you have all the relevant up-to-date vaccination/Titre Testing information and microchip numbers for every dog you bring** to the event that meets the **ASSA Race Rules**.

Race Entries

After the event closing date, late entries will not be accepted, changing of classes will not be permitted and refunds will not be given.

Race Etiquette

All competitors and spectators are to remember the following to ensure safety of both humans and dogs on race days.

- All dogs are to remain on leads, stake out lines or drop lines at all times, if not secured in a cool car or trailer.
- All people and dogs are to remain clear of the racetracks when classes are running.
- **Do not stand in front of the start/finish line, please stay well behind the barriers.**
- Speak to owners of dogs before approaching their dogs.
- Keep a distance of at least 2 metre's from staked out dogs, when walking/stretching your dogs.
- Clean up after yourselves and your dogs to ensure future use of race locations.
- For any enquiries or questions regarding the races please speak to a committee member or race official (race officials will be wearing high visibility vests).

Helmets **MUST** be worn in all bikejoring, scooter and rig classes. Bikes, scooters and rigs must be equipped with cutters (cutters must not have an open blade). Headlights may be required for races if temperatures dictate an early start.

The issued bib must be worn and visible at all times during the race.

Race Etiquette and rules can be found online at www.wassa.com.au, under the documents tab.

Race Schedule

Driver's meetings will be held at the Shearing Shed (No dogs to be taken to race meeting).

You **must attend** the race meeting, should you not be at the meeting as scheduled you will not be able to race in that day's heats.

(If for any reason you cannot get to the race meeting (break down/arranged appointment etc), you must contact the Race Marshall and/or Committee prior to the Race Meeting time to advise/explain your non-attendance for the race meeting and request an exemption. Every request will be individually assessed.)

Heat 1

Driver's meeting will be held at 3 pm Saturday Afternoon 6th August 2022

Racing starts at 4 pm (depending on temperatures)

Classes will be run as follows:

1. Mini Pee Wee / Pee Wee
2. Canicross
3. 1 Dog Veteran, 2 Dog Touring and Novice
4. 2 Dog Veteran, 1 Dog Touring and Junior
5. Bikejoring
6. 1 Dog
7. 2 Dog and 3 Dog
8. 4 Dog and 6 Dog

Heat 2

Driver's meeting will be held at 5:30 am Sunday Morning 7th August 2022

Racing starts at 6 am (depending on temperatures)

Classes will be run as follows:

1. 6 Dog and 4 Dog
2. 3 Dog and 2 Dog
3. 1 Dog
4. Bikejoring
5. 2 Dog Veteran, 1 Dog Touring and Junior
6. 1 Dog Veteran, 2 Dog Touring and Novice
7. Canicross
8. Pee Wee / Mini Pee Wee

***** Heat 2 may be run in Reverse Order, should it be required at the Race Marshalls discretion*****

You will be advised of the race order, and any class changes at the driver's meeting, the above is what we have planned and will depend on the temperatures on the day.

Please arrive at the start chute promptly when called. Races will normally start no more than 10 minutes after the last dog from the previous heat has crossed the finish line.

Start times are approximate. Temperatures on the day will dictate actual start times. Heat 2 may be run in reverse order should it be required and will be advised by the Race Marshall. If safe temperatures are not reached to allow the full race schedule to run as stated, time saving measures will be brought into play being shortening of distances in either or both heats or cancelling of heats.

Please ensure that all dogs not actively competing (or preparing to compete) in the current class are kept either in a cool car or trailer or secured well away from the track.

Please do NOT walk your dog anywhere near the tracks while people are racing.

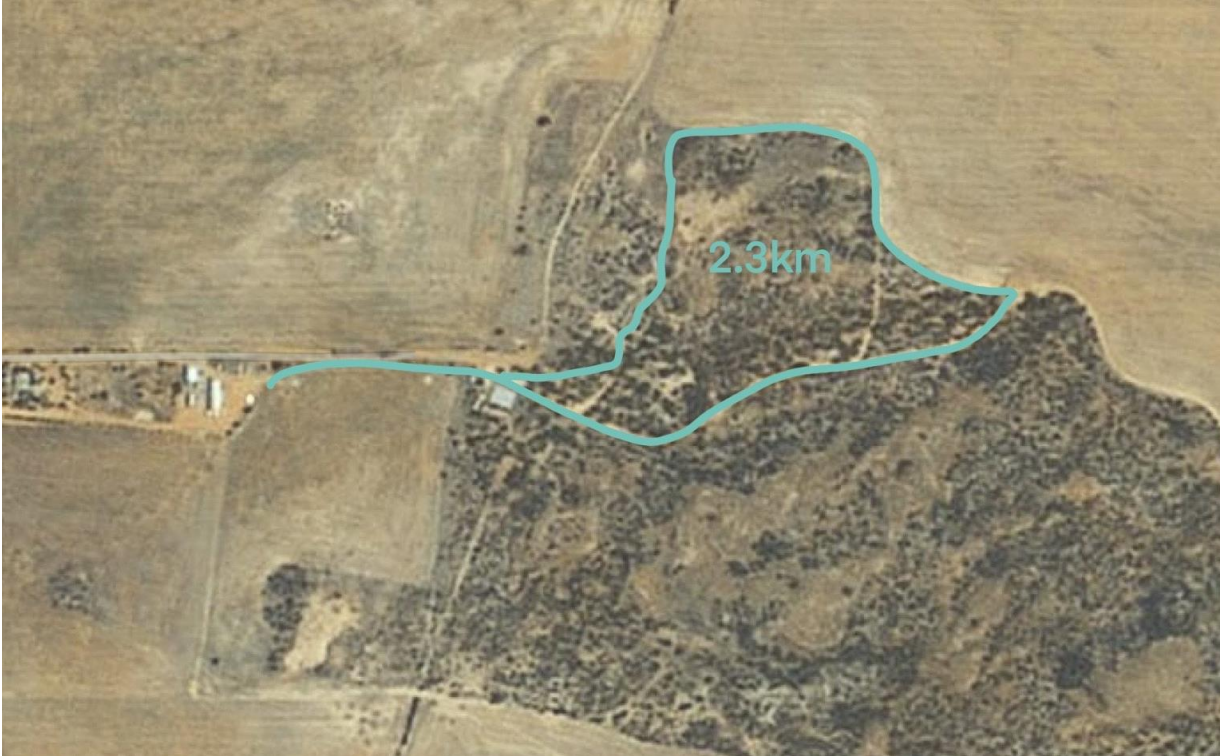
ASSA Race Rules and WASSA Bylaws must be STRICTLY adhered to. The official rules of WASSA are available at wassa.com.au under *Documents*.

Race Tracks

Races will be run on the tracks immediately south of the campsite.

Race distances will be approximately as follows and subject to change depending on weather and track conditions.

Novice, Junior, Veteran (1 & 2 Dog), Touring (1 & 2 Dog) & Canicross = 2.3 kms approx.



1 Dog & Bikejoring = 2.9 kms approx.



2 Dog, 3 Dog = 5.4 km approx.



4 Dog, 6 Dog = 6.7km approx.

