

WASSA - SINGLE HEAT



TOUR DE PINES

13TH JUNE 2021

Information Pack

Tour de Pines is a single heat Open Bikejoring, Novice Scooter and Canicross Sleddog Race hosted by the Western Australian Sleddog Sports Association (WASSA).

Race classes will be approximately 4.5km Open Bikejoring and Canicross, 2.5km Open Bikejoring, Novice Scooter and Canicross.

To cater for our new novices we have added an extra heat especially for you, Novice Scooter, where you can race but you must still adhere to the race rules and proper mushing etiquette. Novices may also race in Canicross but you cannot use the same dog for Novice Scooter and Canicross for this event. No bikes in this event for Novices and should you not have a scooter and wish to compete, please reach out to committee to arrange a scooter to borrow.

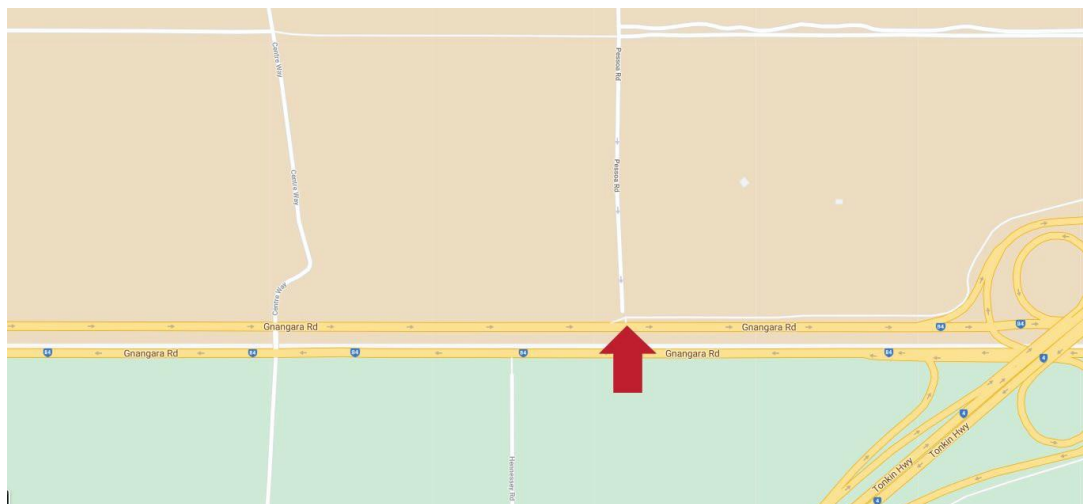
It is the entrant's responsibility to ensure their dogs have the required fitness level to run the distance entered. A driver may compete in more than one class at this event, but dogs must only compete in one class. If running more than one class a different dog must be used in each class entered.

5:00am	Check-in
5:30am	Drivers Meeting
6:00am	Start (temperatures allowing)

Directions

Gnangara Pine Plantation, Lexia

Turn left onto Pessoa Road off Gnangara Road (look for WASSA sign) then follow WASSA Signs.



Emergency Contact Info

EVH Emergency Vet Hospital 1 Chokolich St, Wangara Phone: 9200 4460 24 hours	Kingsway Veterinary Centre Kingsway Shopping Centre 168 Wanneroo Rd, Madeley Phone: 9309 9993 Saturday 9am – 4.30pm Sunday 10am – 12pm
--	--

Parking

Parking will be available onsite. We ask you please ONLY park in the areas marked for parking on the day.

Race Schedule

Drivers meeting at 5:30am Sunday morning

Racing starts at 6:00am (depending on temperature)

- 4.5km Open Bikejoring
- 2.5km Open Bikejoring
- 2.5km Novice Scooter
- 4.5km Canicross
- 2.5km Canicross

There will be time after all the races are completed to cool down your dogs and chat to fellow competitors before presentations.

All dogs MUST be on lead at all times. As a courtesy to competitors, any dogs in attendance not competing must be well clear of races in progress and competing dogs. Please ensure that all dogs not actively competing (or preparing to compete) in the current classes are kept either in the car, trailer or secured well away from the track. Do NOT walk your dog anywhere near the tracks while people are racing.

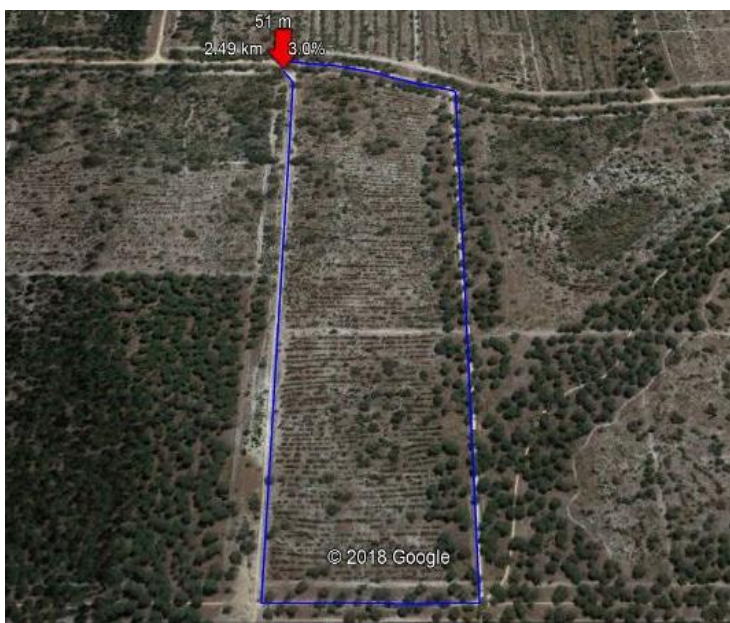
Race rules must be **STRICTLY** adhered to!

Map of Tracks and Distances

****Please note: These are potential tracks and will be confirmed on the event day, this is due to current track damage****

Open Bikejoring, Novice Scooter & Canicross

2.5km track



2.1km track

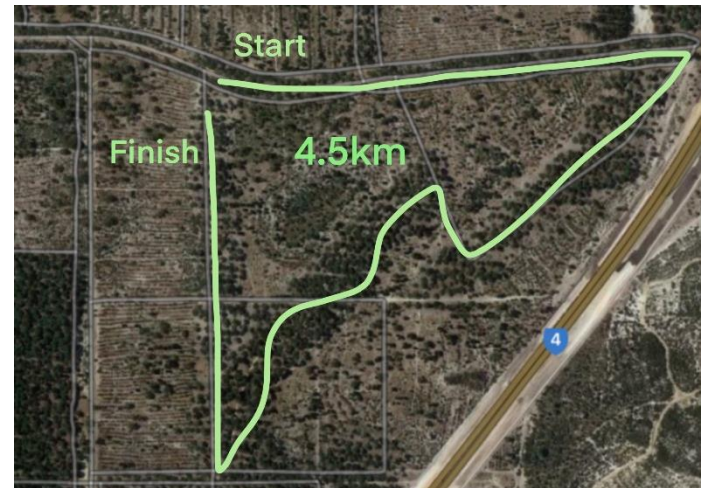


Open Bikejoring & Canicross

4.5km track



4.5km track



Potential layout for the event.



Race Etiquette

All competitors and spectators are to remember the following to ensure safety of both humans and dogs on race days.

- All dogs are to remain on leads, stake out lines or drop lines at all times, if not secured in a cool car or trailer.
- All people and dogs are to remain clear of the racetracks when classes are running.
- **Do not stand in front of the start/finish line, please stay well behind the barriers.**
- Speak to owners of dogs before approaching their dogs.
- Keep a distance of at least 2 metre's from staked out dogs, when walking/stretching your dogs.
- Clean up after yourselves and your dogs to ensure future use of race locations.
- For any enquiries or questions regarding the races please speak to a committee member or race official (race officials will be wearing high visibility vests).

Helmets MUST be worn in open bikejoring and novice scooter classes. Bikes and scooters must be equipped with cutters (cutters must not have an open blade). Bike/Scooter headlights may be required for races if temperatures dictate an early start.

The issued bib must be worn and visible at all times during the race.